

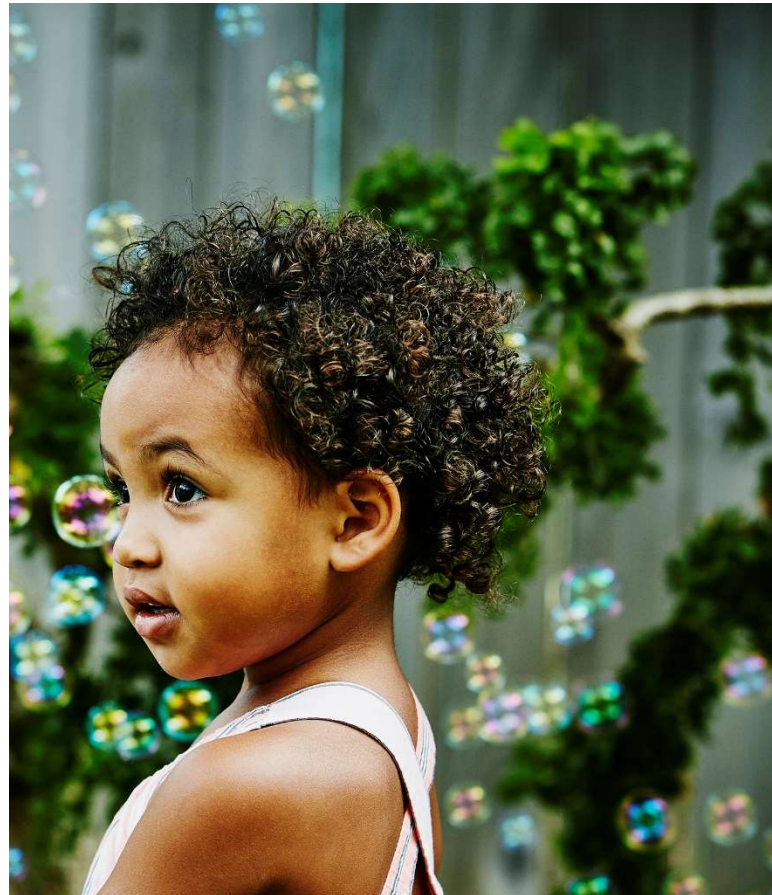
2020 ANNUAL REPORT

47	5
Employees/Contractors	Programs/Services
2330	3
Client Served	Revenue Sources

The mission of Serving Children and Reaching Families is to give at-risk children and families the opportunity to reach their full potential by breaking down barriers, increasing community support and maximizing personal growth.

OUR BOARD

Lawrence Knight
Vina Small
Diana Deitrick
Jennifer Campbell



“Safety and security don’t just happen; they are the result of collective consensus and public investment. We owe our children, the most vulnerable citizens in our society, a life free of violence and fear.”
-Nelson Mandela

Serving Children and Reaching Families, LLC



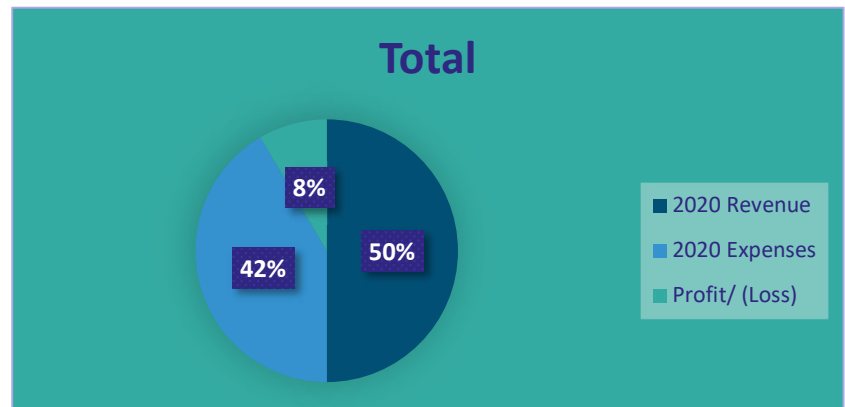
Financials

2020 Revenue: \$2,645,261

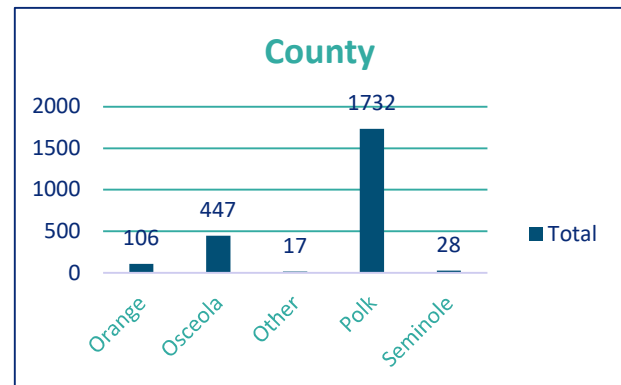
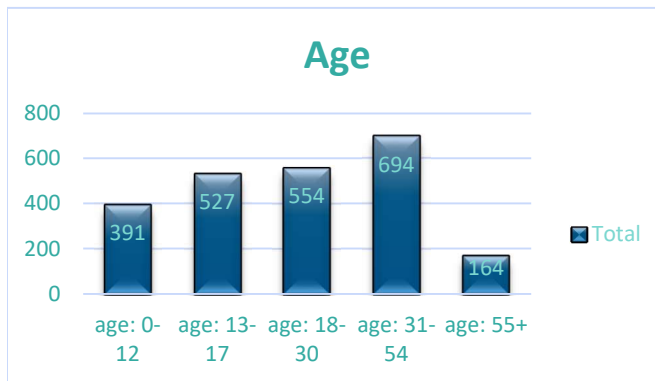
2020 Expense: \$2,199,523

2020 Net Assets: \$445,738

2020 Source of Revenue	Sum of Total
County and Local Funds	887,249.68
Medicaid Funds	1,451,184.09
Other Funds	21,961.79
Federal Funds	-
State Funds	-
Grand Total	2,360,395.56



Client Demographics



Accomplishments

- 2000 children diverted
- We broadened our telehealth services to reach more patients
- 98 percent diversion rate

Patrina Lawrence, CEO
Maria Lawrence, CFO/COO

Headquarters

1216 Patrick Street
 Kissimmee, Florida 34741
 321-236-1540
www.scarffl.com

Community Partners

